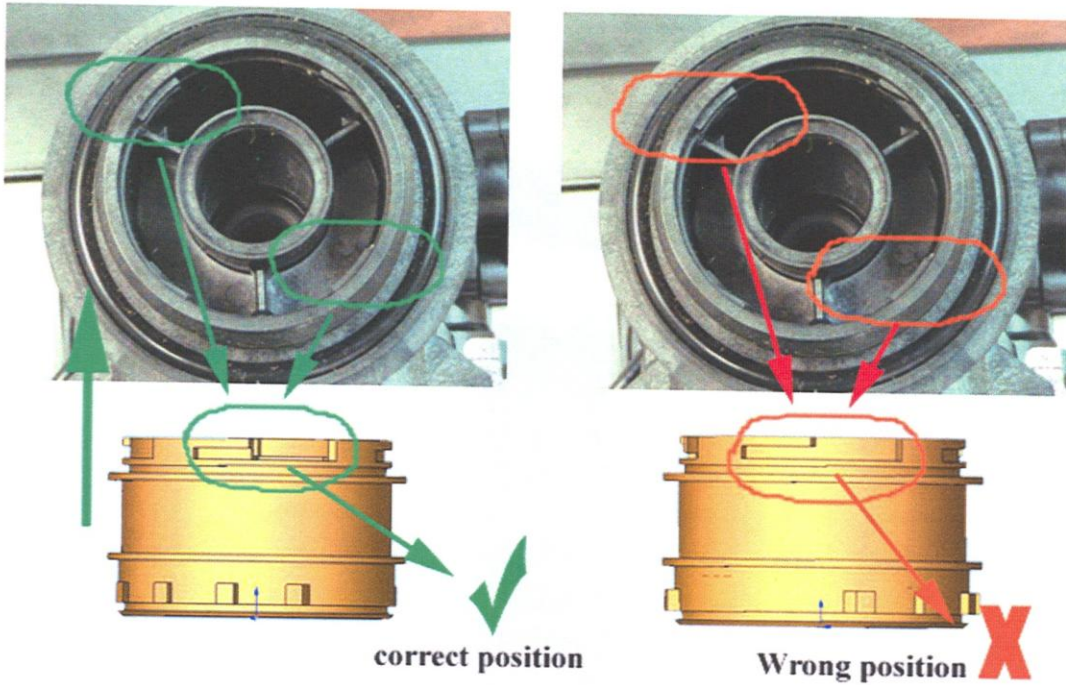


## Use of Fleck Adaptor



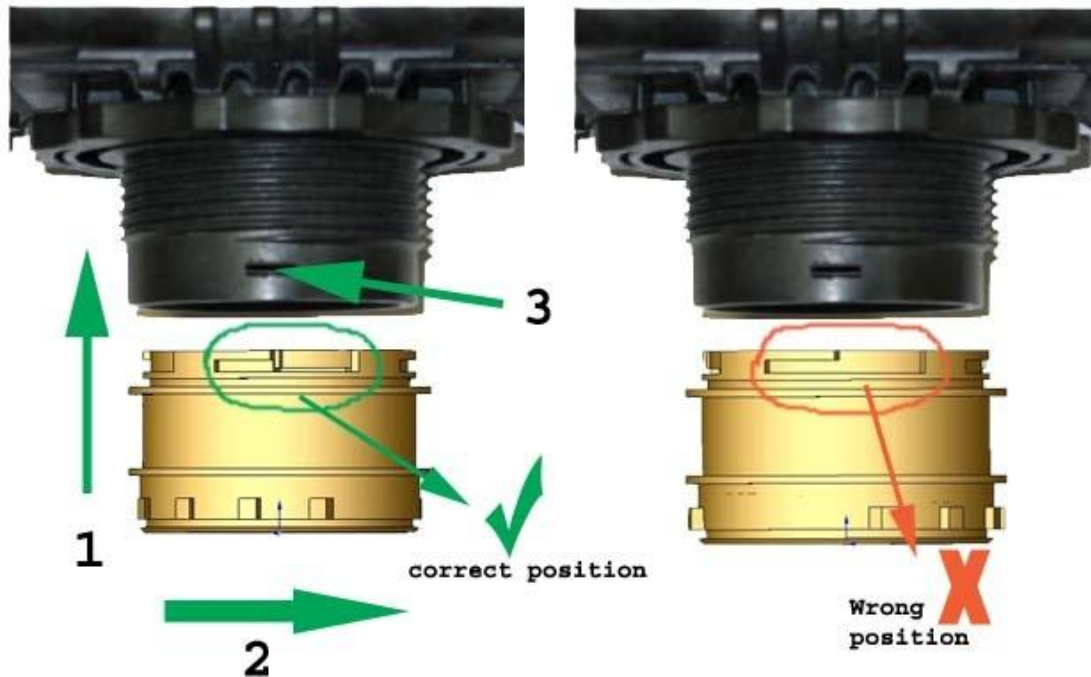
1. Move adaptor into the base of Fleck valve.  
Twist clockwise and lock.



Some burrs may exist to prevent smooth twist and lock motion.  
Need to be removed by knife or cutter.

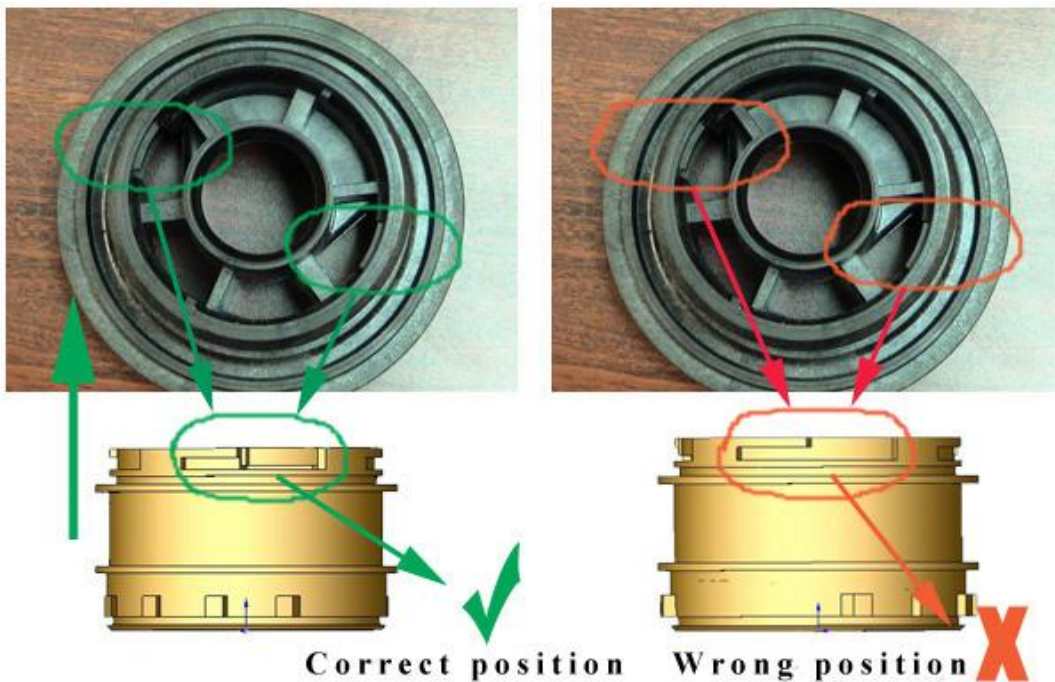
## Use of Performa Adaptor

Follow the instructions as below:



1. Move adaptor into the base of Performa valve.
2. Twist clockwise and lock the adaptor into the base of Performa valve.
3. **MUST** use ABS cement to adhere the adaptor firmly onto the bottom of the valve & to cover the two (2) holes on the bottom of the valve completely.

## Use of Clack Adaptor



- 1. Move adaptor into the base of Clack valve.  
Twist clockwise and lock.**
- 2. MUST use ABS cement to adhere the adaptor firmly onto the bottom of the valve.**